

ABC-123

Making Sense of It All

Stacy Eslick
Mindy Willard

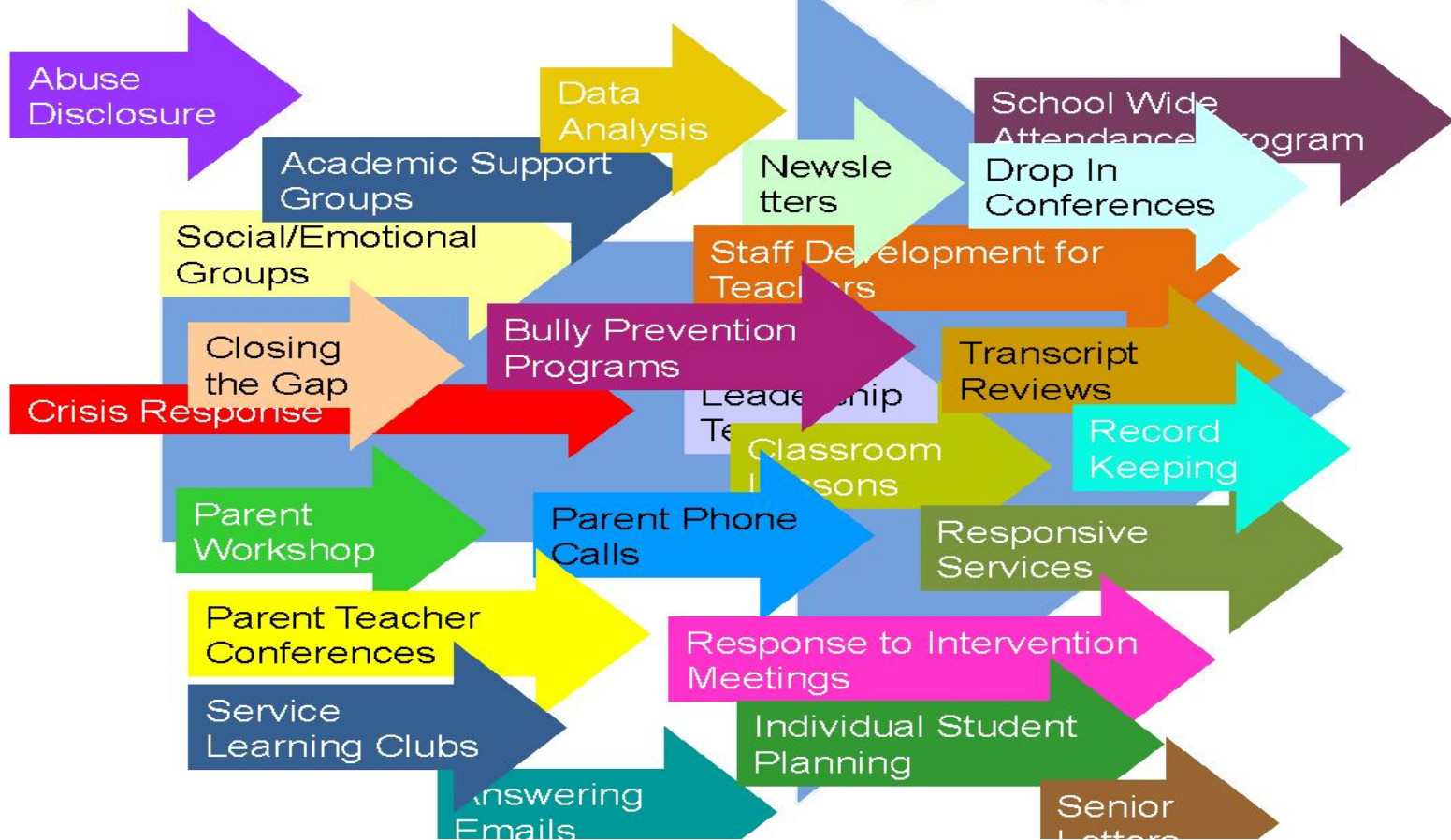
A black and white photograph of a bare tree in a snowy landscape. The tree is on the left side of the frame, with its branches reaching out against a light, overcast sky. The ground is covered in snow. Overlaid on the right side of the image is the text "WHY ARE YOU HERE?" in a large, bold, black, sans-serif font. The text is slightly shadowed, giving it a 3D appearance as if it's floating or standing on the snow. The entire image is framed by a thin, light-colored border.

**WHY ARE
YOU HERE?**

Good Things Happen



More Intentional Things Happen



ASCA National Model



One Word

What is going well for you with the model?

Alphabet Soup

Turn

TALK

and

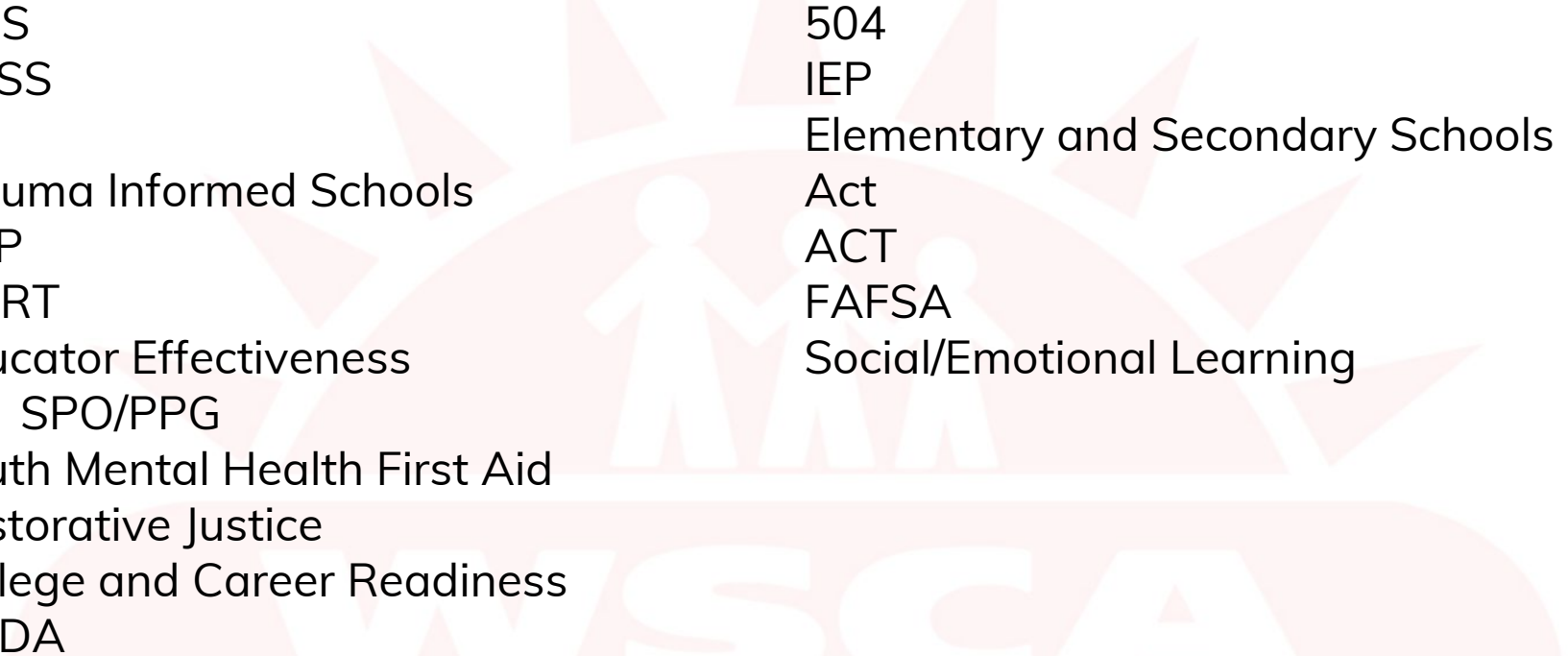
What are the major initiatives happening in your district?

WVSCA

Alphabet Soup

PBIS
MTSS
RTI
Trauma Informed Schools
ACP
SBIRT
Educator Effectiveness
- SPO/PPG
Youth Mental Health First Aid
Restorative Justice
College and Career Readiness
AODA

504
IEP
Elementary and Secondary Schools
Act
ACT
FAFSA
Social/Emotional Learning



Academic Development

- Dual Credit Opportunities
- Transcript Reviews
- Tutoring Referrals
- Study Skills
- Course Selection
- Course Entry
- Motivation
- Test Anxiety
- 8-9, 5-6, 12+ Transitions
- AP Recruitment/Supports
- Small Groups
- Grade Level Conferencing
- 9th Grade on Track
- Monitoring Grades, Attendance
- Credit Recovery
- Parent Nights
- Interpreting Test Scores

Career Development

- Academic and Career Planning
- ECSA/Pathways Recruitment
- Resume Writing/Interviewing
- Financial Aid/FAFSA/Scholarships
- Internships/Apprenticeships Referrals
- EOS/AP Recruitment
- College/Career Fairs
- College Applications
- Grade Level Conferencing
- Pre College Programs
- Summer Melt
- Letters of Rec
- Parent Nights
- Senior Survey

Social Emotional Development

- Individual/Small Group Counseling:
 - Friend & Family Issues
 - Sadness
 - Worries/Stress
- Individual/Small Group Skill-Building:
 - Social Skills
 - Grief & Loss
 - Family Change
- Restorative Conv.
- Classroom Lessons
- Risk Assessments
- Trauma Informed Care
- Transition Supports
- New Student Orientation
- Related Service Supports
- Consultation/Referral



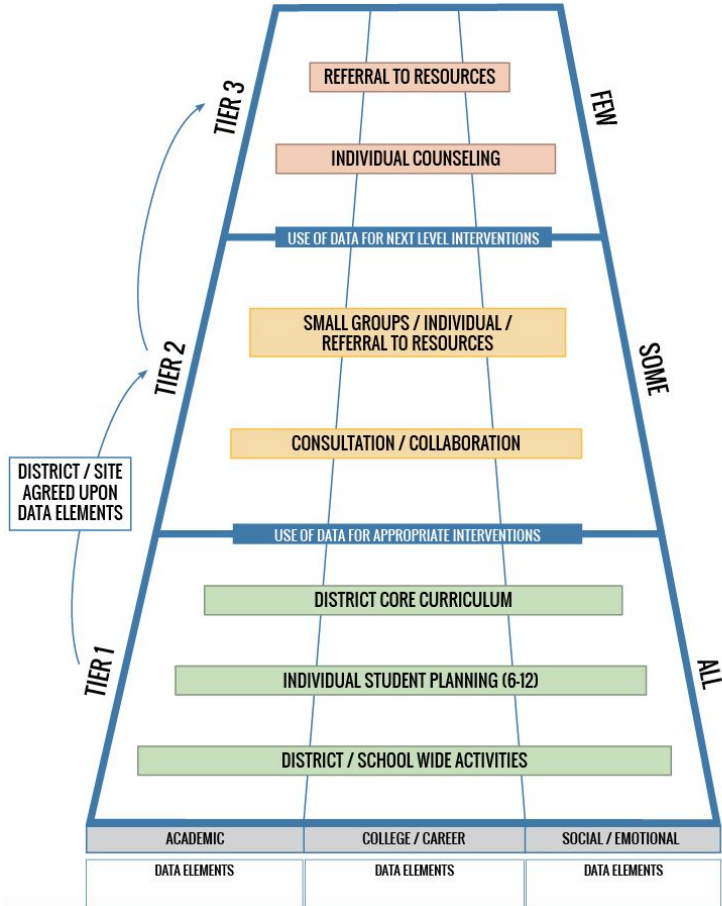
What are some of the **challenges** you have with aligning your daily work to the ASCA model?



WSCA



MTMDS



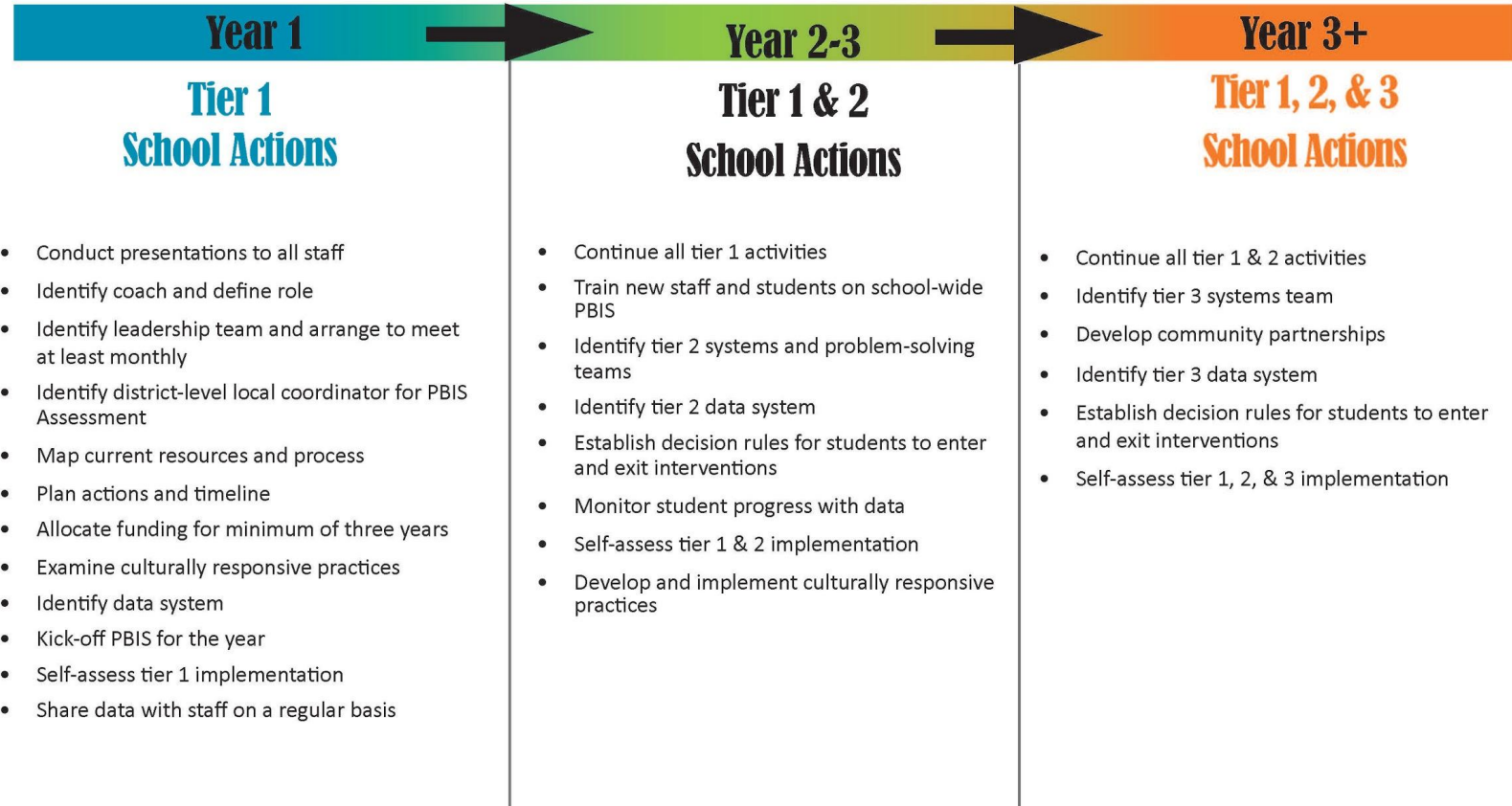
Multi-tiered, Multi-Domain System of Supports School Counseling Program Delivery Model

PBIS Implementation Continuum



WISCONSIN
PBIS Network

IDEA CFDA 84.027

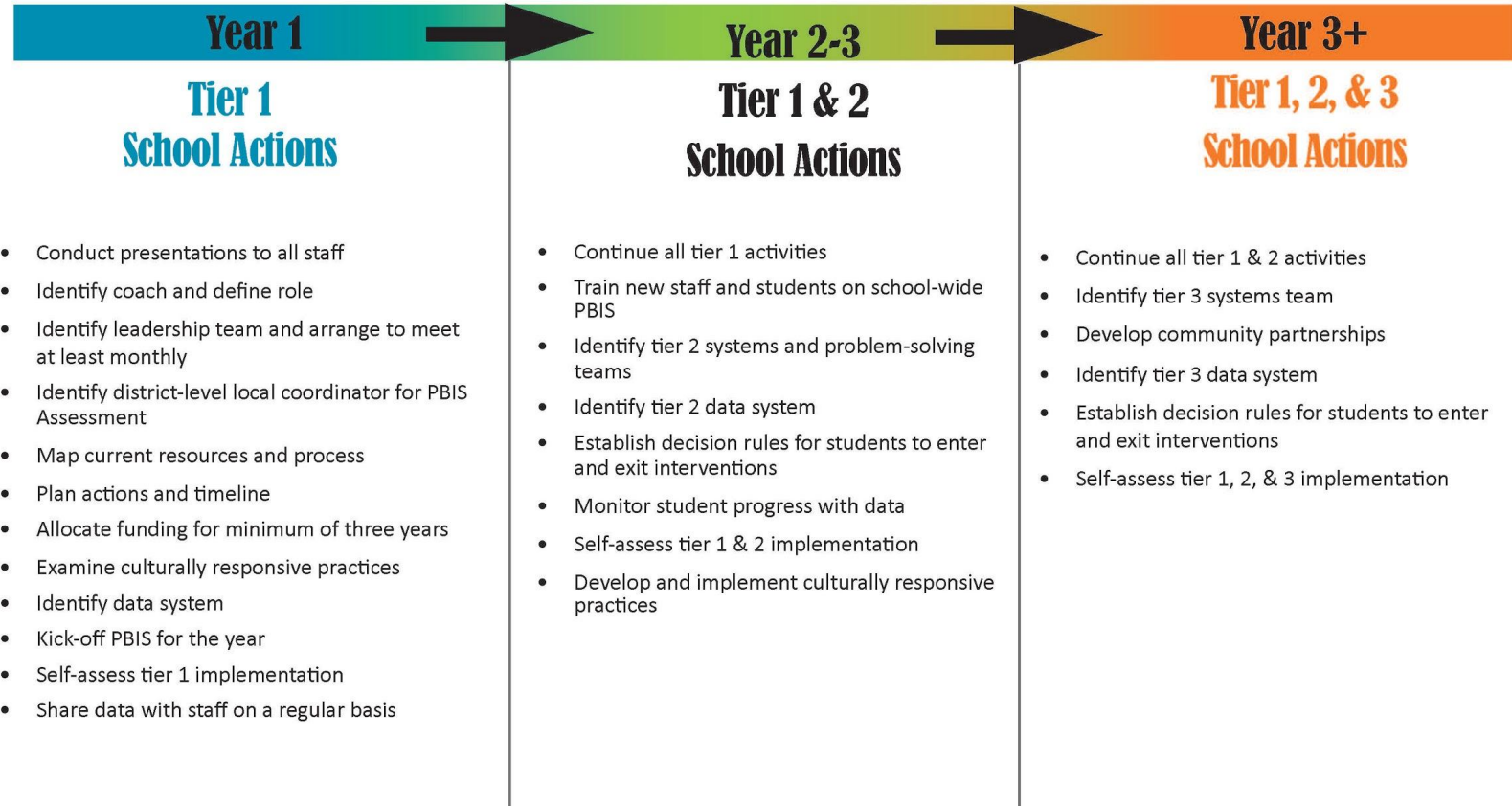


PBIS Implementation Continuum



WISCONSIN
PBIS Network

IDEA CFDA 84.027



Alphabet Soup

Turn

TALK

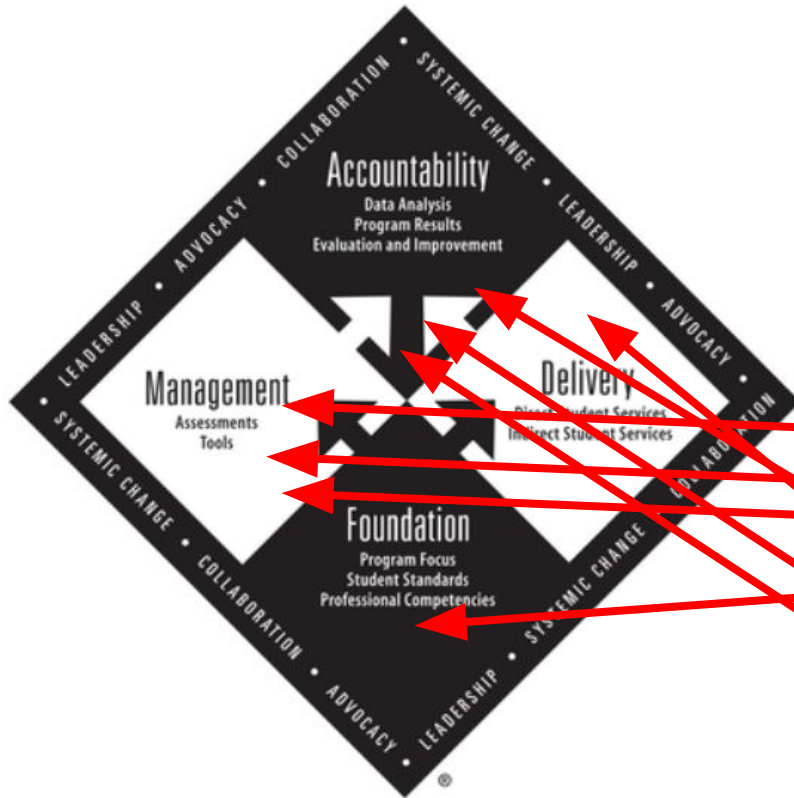
and

What commonalities do you see between the two?

WVSCA

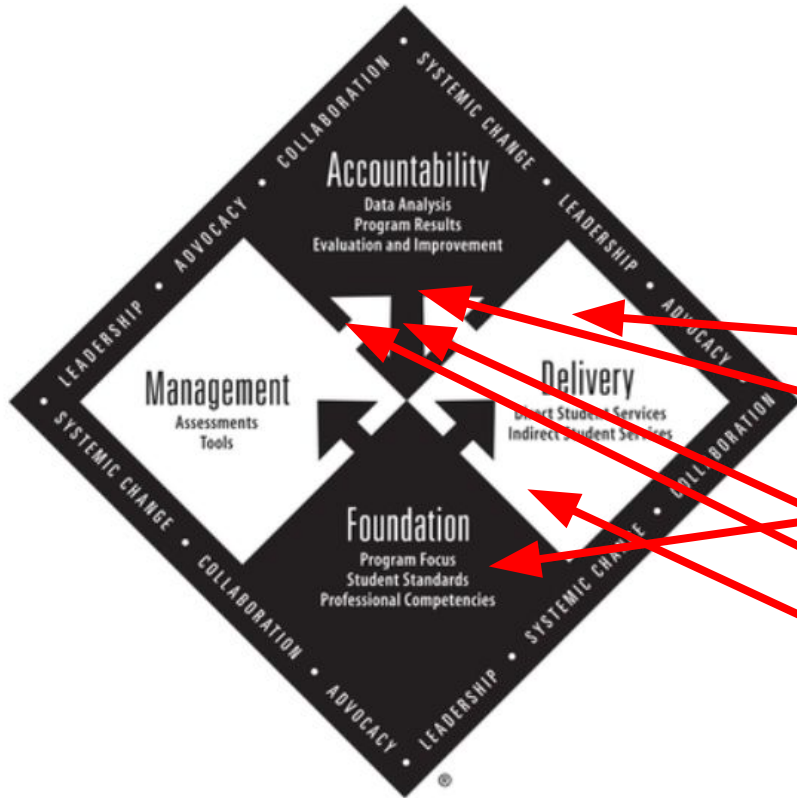
Year 1 PBIS Implementation

Tier 1 School Actions



- Conduct presentations to all staff
- Identify coach and define role
- Identify leadership team and arrange at least monthly
- Identify district-level local coordinator
- Assessment
- Map current resources and processes
- Plan actions and timeline
- Allocate funding for minimum of 10%
- Examine culturally responsive practices
- Identify data system
- Kick-off PBIS for the year
- Self-assess tier 1 implementation
- Share data with staff on a regular basis

Year 2 PBIS Implementation



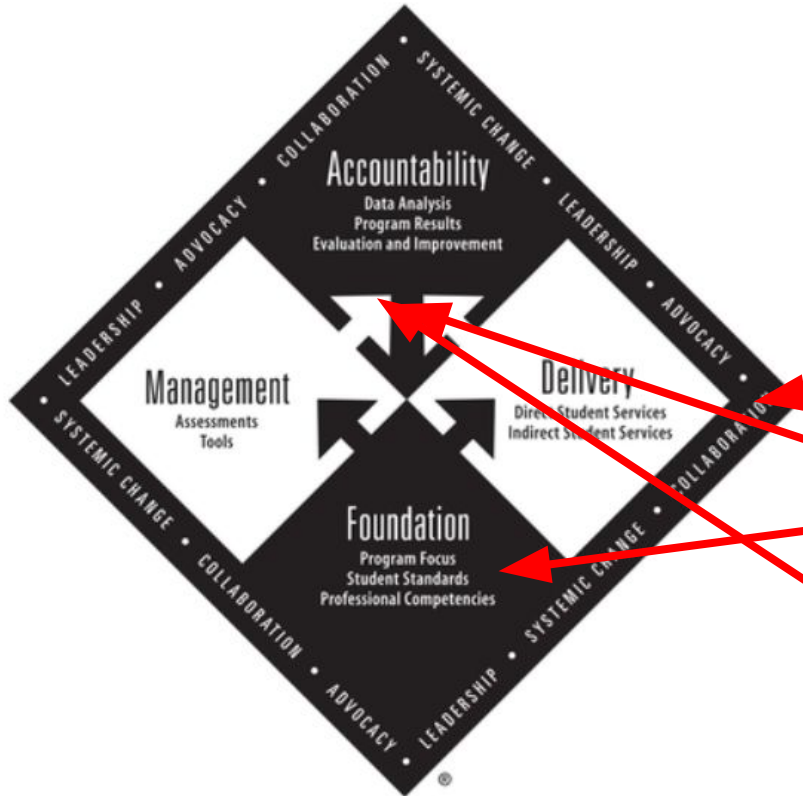
Tier 1 & 2 School Actions

- Continue all tier 1 activities
- Train new staff and students on school-wide PBIS
- Identify tier 2 systems and problem-solving teams
- Identify tier 2 data system
- Establish decision rules for students to enter and exit interventions
- Monitor student progress with data
- Self-assess tier 1 & 2 implementation
- Develop and implement culturally responsive practices

Goals

Making Connections

Tier 1, 2, & 3 School Actions



- Continue all tier 1 & 2 activities
- Identify tier 3 systems team
- Develop community partnerships
- Identify tier 3 data system
- Establish decision rules for students to enter and exit interventions **Goals**
- Self-assess tier 1, 2, & 3 implementation

Connections



What initiative is happening in your school?

What connections can you make to the model?

HUH?





*Advocate with the
ASCA National Model*

WSCA



" NOT MY JOB!!! "

Elements of Comprehensive School Counseling Programs

Foundation	Delivery	Management	Accountability
Beliefs Vision Mission Data Profile Program Goals ASCA Mindsets and Behaviors Professional Competencies	Direct Student Services (80%) <ul style="list-style-type: none"> ● Core curriculum ● Indiv. Student Planning ● Responsive Services Indirect Student Services (20%) <ul style="list-style-type: none"> ● Consultation ● Collaboration 	Annual Agreement Annual Calendar Weekly Calendar Use of Time Analysis Closing the Gap Action Plan Small Group Action Plan Core Curriculum Action Plan Advisory Council	Closing the Gap Results Report Small Group Results Report Core Curriculum Results Report Program Evaluation



Do
One
Thing



Choose it.
Do it.
Share it.

Questions



Mindy Willard

mjwillard@madison.k12.wi.us

Stacy Eslick

stacye@wscaweb.org

SCA