

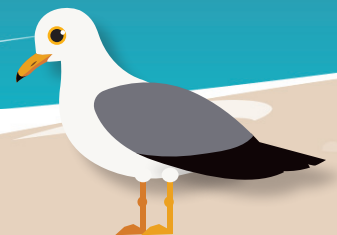


NOVEMBER 6–8, 2024

Kalahari Resort and Convention Center
Wisconsin Dells, Wisconsin

"I always learn something new when I attend ...
this conference seriously refreshes my soul!"

- 2023-2024 Conference Attendee



**Catch the Wave to excellence in equitable school counseling
at this year's annual conference!**

WELCOME TO THE WSCA 2024 ANNUAL CONFERENCE!

Join fellow Wisconsin School Counselors at the WSCA Annual Conference and surf toward connections and learning.

WHY ATTEND?

The November 2024 WSCA Annual Conference will be filled with professional development and personal growth.

WSCA believes the value of attending the conference in person includes spending time together, networking, and empowering each other to be confident in our school counselor practice.

► **The 2023-2024 Conference had a 96% satisfaction rate!**



#1 LASTING CONNECTIONS

At the WSCA conference, school counselors enjoy meeting in person, collaborating, networking, and feeling empowered by like-minded professionals!

► **97% of attendees say they would recommend registering to a friend or colleague!**



#2 AFFORDABLE RATES

With two keynote speakers, 80+ breakout sessions, and so much included in the registration price, the WSCA conference is a great value compared to other professional development opportunities around the state.

► **99% of attendees loved the Kalahari conference venue and accommodations!**



#3 QUALITY SPEAKERS

The WSCA Conference hosts nationally recognized speakers alongside top local professionals, all of whom leave attendees feeling energized, informed, and with resources to help the students they serve.

► **92% of attendees were thrilled by the sectional offerings!**



#4 COMPREHENSIVE SESSIONS

The WSCA Conference is THE conference in the state devoted to school counselors' unique professional development needs.

► **95% of attendees say they gained knowledge and resources to bring back to their school!**



"I came over 1,000 miles to attend this conference. As a school counselor in another state, I look forward to seeing what other states/districts have to offer. WI seems like it has a great program! Your conference was one of the best I've been to. (I've attended conferences in 10 other states.)"

- 2023-2024 Conference Attendee

SCAN HERE
TO REGISTER
NOW!



LASTING CONNECTIONS

At the WSCA conference, school counselors enjoy meeting in person, collaborating, networking, and feeling empowered by like-minded professionals!

WELCOME TO WSCA MIXER!

WEDNESDAY, NOVEMBER 6

If you plan to attend a preconference session or check into the hotel on Wednesday evening, consider kicking off your conference experience by joining us for the Welcome to WSCA Mixer! Socialize at the cash bar and win prizes playing music trivia!

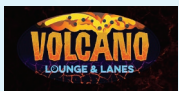
Registration will be open during the mixer!

WSCA SOCIAL

THURSDAY, NOVEMBER 7

CHOOSE A THURSDAY NIGHT SOCIAL THAT SUITS YOUR TASTE!

We are happy to announce that due to the high attendance levels at our Thursday night social, we will continue holding the event in two separate locations so that you can choose the venue based on your socializing preferences!



The Volcano Lounge is sure to please if you love an energetic and bustling social experience! Join friends for appetizers, bowling, games, and connections!



Redd's Piano Lounge could be more your speed if you enjoy conversation with a side of piano and ambiance. Come lounge in a comfortable setting and form connections while enjoying a lively piano performance!

OTHER OPPORTUNITIES TO CONNECT AT THE CONFERENCE

- Meet Your Match Buttons
- Exhibit Scavenger Hunt
- Water Park and Kalahari Fun
- WSCA Booth
- Special Interest Group Meetings
- Games and Prizes Throughout the Conference
- Ample Space for Informal Networking
- Several Social Events for Specific Groups
 - Counselors of Color Meetup
 - Grad Student Social
 - Past WSCA Leaders Social
 - and More!



"My favorite part of conference was attending with my colleagues and having the space and the time to collaborate outside of school."

- 2023-2024 Conference Attendee



AFFORDABLE RATES

With two keynote speakers, 90+ breakout sessions, and so much included in the registration, the WSCA Conference offers quality professional development with unmatched value.

INCLUDED WITH CONFERENCE REGISTRATION!

- WSCA Membership Included With Non-Member Conference Registration
- Conference App With Access to Handouts and Resources
- Professional Headshots
- Board Listening Session
- Member Benefit Promotion
- Largest School Counselor Exhibit Hall in the Midwest
- Sponsor Sectionals
- ASCA Model Consultation
- Conference T-Shirt (pending T-shirt sponsorship)
- Professional Recognition Award Ceremony

REGISTRATION ALSO INCLUDES THE FOLLOWING MEALS:

WEDNESDAY:

Lunch for All-Day Registration

THURSDAY:

Continental Breakfast
Lunch
Nutrition Break
Social/Reception

FRIDAY:

Brunch

ACCOMMODATIONS: KALAHARI RESORT

Kalahari Resort rooms in the WSCA block start at \$119.

All accommodations details, including the booking link and cut-off date, can be found online at: <https://www.wscaweb.org/conferences/2024-2025-annual-conference/accommodations/>

• Come for the conference, stay through the weekend!

Limited WSCA block rooms are available through the weekend. Be sure to book early for the special rate.



THE HOTEL BLOCK IS NOW OPEN

RESERVE YOUR ROOM TODAY!

Free Wi-Fi, parking, and waterpark passes



"The amount of sessions, the time between sessions giving us time to get where we are going, and the FOOD... OMG YUMMY!!!"

- 2023-2024 Conference Attendee



QUALITY SPEAKERS

The WSCA Conference hosts nationally recognized speakers alongside top local professionals, leaving attendees feeling energized, informed, and with resources to help the students they serve.



THURSDAY, NOVEMBER 7

DR. LORI DESAUTELS | OPENING KEYNOTE SPEAKER

Our Journey Through the Developing Nervous System as We Rewire Our Perceptions of Discipline

In this presentation, we will explore how our nervous systems are impacted by adversity, trauma, and experiences of resiliency through deepened connections and sensory regulation. Behaviors are only signals or indicators that the brain and body are struggling in survival states of functioning. In our time together, we will explore how we get out in front of the behavior through our procedures, routines, and transitions. We will also explore the differences between co-regulation and coercive regulation which is the foundation of discipline practices that move us through challenging moments while attending to our emotional, social, and physiological health.



FRIDAY, NOVEMBER 8

DR. WILLIAM T. L. COX | CLOSING KEYNOTE SPEAKER

Harnessing Cognitive-Behavioral Science to Develop Effective Diversity Interventions: 16 Years of the Bias Habit-Breaking Training

Research consistently shows that non-scientific bias, equity, and diversity trainings do not work, and often make bias and diversity problems worse. Despite these widespread failures, there is considerable reason for hope that effective, meaningful DEI efforts can be developed, if we draw on the science of cognitive-behavioral change. One approach in particular, the bias habit-breaking training, has 16 years of experimental evidence demonstrating its widespread effectiveness and efficacy. In this presentation, Dr. Cox will elaborate on how his team applied diversity science to develop and test this intervention approach, and share a selection of research findings showing how science-informed diversity interventions like the bias habit-breaking training can create lasting, meaningful impacts on individual and institutional outcomes.



*"I left feeling more energized
and got a lot of great ideas to
take back to my building!"
- 2023-2024 Conference Attendee*

**SCAN HERE
TO REGISTER
NOW!**



COMPREHENSIVE SESSIONS

PRECONFERENCE WORKSHOPS



The WSCA Conference is THE conference in the state devoted to school counselors' unique professional development needs.

Every year, our school counselors say they would like more time to learn about specific topics they encountered during the WSCA Conference. Based on the recommendations from YOU, the school counselors of Wisconsin, we have assembled a high-quality, diverse set of preconference sessions.

Mix and match two half-day sessions, or attend a full-day session to focus more in-depth on a single topic. Create a preconference day that provides the best learning opportunities for your professional development needs!

With our resources and feedback, we are proud to say the preconference team can also bring in well-known national speakers to provide high-quality professional development.

Check out the [Preconference webpage](#) to learn more.

NOVEMBER 6, 2024: PRECONFERENCE WORKSHOPS THEMES AND TRACKS

Use these tracks to help design the perfect professional development day with a focus on what matters most to YOU!

Social/Emotional	MORNING
	School Counselor as Mental Health Consultant: Addressing Child Anxiety in Schools (6-12)
	Putting Protocols in Place: Bullying Prevention, Traumatic Classroom Events, Soft Starts, Impact Statements, Check-Ins, and More (K-12)
	Supporting Students With AODA (K-12)
	AFTERNOON
	"You Never Told Me That!" A Guide to Using the Tiers to Support Middle School Students (6-8)
	Educator Nervous System States Through the Lens of Applied Educational Neuroscience (K-12)
	Advanced Solution Focused Counseling-Theory and Practice (K-12)
	Engaging Students in Activity-Based Counseling (K-12)
Leadership/Advocacy	MORNING
	Advocacy is Where It's At! Using Data, School Counseling Programming, and Our School Counselor Superpowers. We Can Be Fierce Advocates for Our Students and Our Profession! (K-12)
	AFTERNOON
	Advocacy 101 and Beyond – School Counselor State Level Advocacy (K-12)
Academic/Career/Postsecondary	FULL DAY
	College Counseling Institute (9-12)
	MORNING
	Cutting-Edge Strategies to Develop Independent Executive Function Skills (K-12)
	AFTERNOON
	It's Never Too Early! Academic and Career Planning in Elementary (K-5)
Equity	Counseling 2.0: Integrating Computing in Your Counseling Program (K-12)
	MORNING
	Empowering People to Break the Bias Habit: Evidence-Based Approaches to Reduce Bias, Create Inclusion, and Promote Equity (K-12)
	The ASCA National Model is Equity in Action (K-12)
	AFTERNOON
	Allyship in Action: Creating Safe Spaces for All Students Within Your Community (K-12)

Some topics may address more than one theme. Please read the full description for more information.

COMPREHENSIVE SESSIONS

PRECONFERENCE WORKSHOPS

FULL-DAY WORKSHOP

9:30 AM–4:30 PM

College Counseling Institute (9-12)

*Beth Gilfillan, PhD, NCC, PEL (IL),
Assistant Professor of School Counseling,
Northeastern Illinois University*

This professional development opportunity is designed for school counselors with zero to three years of school counseling experience or in a new role assisting students and their families in the college search and application process. Graduate students in school counseling programs are also welcome! Topics will include: Developing your college counseling programs (including the incorporation of MTSS), incorporating career counseling, school counseling responsibilities, and timelines; building collaborative relationships and involving families in the post-secondary planning process; college access counseling for diverse student groups, including first-generation college students; current trends, resources, and ethics in college counseling; financial aid processes; and more!

Track: Academic/Career/Post Secondary

MORNING WORKSHOPS

9:30 AM–12:30 PM

Advocacy is Where It's At! Using Data, School Counseling Programming, and Our School Counselor Superpowers, We Can Be Fierce Advocates for our Students and our Profession! (K-12)

*Marianne Matt, MS, School Counselor 9-12,
Madison Metro School District*

*Kim Auer, School Counselor,
Pacelli Catholic Schools*

*Sarah Eder, PK-12 School Counselor,
Hurley School District*

*Amanda DeSua, Elementary School
Counselor, School District of Waukesha*

As practicing school counselors, we advocate daily. Our advocacy takes many forms. On an individual basis with our students, we advocate to ensure they can access their education equitably. At the school level, our school counseling programs lead the way for advocacy by utilizing data to inform our work and to inform our stakeholders of the importance of our work/programming for students and for the school. At the district level, our programming and our

skill as advocates provide information that can determine funding, allocation, and programming to ensure all students are able to learn and grow. Advocacy in both rural and urban school districts will be discussed, including strategies from a solo counselor as well as counselors who are part of a team.

Track: Leadership/Advocacy

Cutting Edge Strategies to Develop Independent Executive Function Skills (K-12)

*Sarah Ward, MS, CCC/SLP, Speech
and Language Pathologist, Cognitive
Connections, LLP*

This session will give school counselors a new view and understanding of how students can independently execute tasks and will systematically address the skills of forethought, organization, planning, time awareness, task completion, and cognitive flexibility. These skills are critical so students can envision it, organize it, plan it, do it, and get it done! This is a practical strategies session that will clearly define what executive function skills are for the purpose of determining the most effective interventions and understanding of the development of executive function skills and what is meant by the term "executive dysfunction." Participants will learn dozens of functional, ready-to-use strategies for teaching students how to develop executive function skills. Learn how to use the Get Ready*Do*Done Model to turn core curriculum and school counseling program action plans into powerful tools to teach executive control skills as well as adopt fresh approaches to help students develop automaticity for routines and transitions.

Track: Academic/Career/Post Secondary

Empowering People to Break the Bias Habit: Evidence-Based Approaches to Reduce Bias, Create Inclusion, and Promote Equity (K-12)

*William T. L. Cox, PhD, Founder/CEO,
Inequity Agents of Change*

Dr. Cox and his colleagues have developed and experimentally tested the bias habit-breaking intervention. This intervention will be shared during the training to 1) equip attendees with a deeper understanding of ways that race bias, gender bias, or other intergroup biases can seep into judgments and behavior unintentionally, and 2) empower people to reduce the

influence of those biases by teaching a set of concrete evidence-based tools for reducing biases and creating inclusion.

The bias habit-breaking intervention was the first and remains the only intervention that has been shown experimentally to produce long-term reductions in bias and increases in inclusion and equity. In contrast to other diversity or bias training methods that are neither evidence-based nor experimentally tested, the habit-breaking intervention's effectiveness has been rigorously demonstrated in many randomized-controlled experiments. This training empowers people to become impactful, autonomous agents of change, both within their own minds and behavior and in the social institutions they inhabit.

Track: Equity

The ASCA National Model is Equity in Action (K-12)

*Mindy Willard, MA, Director of Outreach
and Engagement, Hatching Results*

Stacy Eslick, Executive Director, WSCA

The ASCA Model is designed to guide school counselors through the development, implementation, evaluation, and improvement of a comprehensive school counseling program built on school-specific data. This workshop will address how school counselors are educational leaders who promote access and equity for all by helping students meet high standards through identifying and removing equity barriers and using school counseling program results to drive next steps.

Track: Equity

Putting Protocols in Place: Bullying Prevention, Traumatic Classroom Events, Soft Starts, Impact Statements, Check-Ins, and More (K-12)

*Eric Becker, MSE, Middle School Principal,
School District of Ashland*

Learn directly from the Ashland school district how putting protocols, procedures, and programming in place has helped transform their schools. Examples of bullying protocols, traumatic event procedures, check-in processes, soft starts, and other built-in services have helped school staff respond in a consistent and effective manner. These practices have clarified

Continued on next page

COMPREHENSIVE SESSIONS

PRECONFERENCE WORKSHOPS

for students, teachers, and families the school's response to incidents. Establishing a common response before a problem arises has helped students and staff feel supported, heard, and involved, and the protocols have drastically reduced the number of repeat incidents. All procedures and methods will be shared with participants, and time will be set aside to aid in customizing them for participants' individual buildings and districts.

Track: Social/Emotional

School Counselor as Mental Health Consultant: Addressing Child Anxiety in Schools (6-12)

Michael Axelrod, PhD, LP, NCSP, Director & Professor, UW-Eau Claire

Child and adolescent lifetime prevalence rates of mental health disorders are estimated to be as high as 50%, with anxiety being the most common (Merikangas et al., 2010). School counselors are well-positioned to support students with mental health issues through the delivery of direct intervention services and consultation with school staff and parents. The purpose of this presentation is to provide school counselors with research-supported conceptualizations of anxiety and evidence-based strategies that are practical given a school-based context.

Track: Social/Emotional

Supporting Students With AODA (K-12)

TBD

Track: Social/Emotional

AFTERNOON WORKSHOPS

1:30 PM–4:30 PM

"You Never Told Me That!" A Guide to Using the Tiers to Support Middle School Students (6-8)

Sam Dusek, MSE, Middle School Counselor, Meyer Middle School/River Falls School District

Cindy Bourget, MS, Middle School Counselor, Elk Mound Middle School

Joe Wiesner, MSE, School Counselor, Manitowoc Lincoln High School

Join middle school counselors to learn about their comprehensive school counseling programs. This session will be engaging and practical, and participants will leave with fresh ideas and resources that they can take back to their own middle school programs. The focus will be on using a data-driven MTSS to provide equitable programming that is provided by all staff – not just the school counselor. Please note that while this session is designed to provide middle school counselors with interventions specific to students in grades 6-8, the information and resources for building an MTSS in your school can be applied to every level.

Track: Social/Emotional

Advanced Solution Focused Counseling-Theory and Practice (K-12)

Mark Gillen, PhD, Professor, University of Wisconsin-River Falls

This session will focus on three areas related to solution-focused counseling and school counselors daily practice: 1) resetting the foundational work that underlies all the counseling skills of school counselors, 2) revisiting foundation solution focused mindsets, and 3) applying the information to participants' cases and issues. There will be time set aside as an open forum with questions from participants.

Track: Social/Emotional

Advocacy 101 and Beyond - School Counselor State Level Advocacy (K-12)

Cydney Martin, MS, School Counselor and Government Relations Director, WSCA

Stacy Eslick, Executive Director, WSCA

Due to the changes and challenges facing the Wisconsin legislature and the unknowability of the newly adopted maps, and numerous legislators not seeking reelection, WSCA has made the challenging decision to cancel the annual in-person Afternoon on the Hill event. Instead, join WSCA leaders and other education stakeholders for an afternoon focused on building advocacy skills to engage with elected officials and other statewide organizations that impact the work of school counselors. Topics that will be of critical importance will be advocacy with those who are responsible for crafting and passing the 2025-27 state budget as well as education policy decisions. With new districts and a cohort of newly elected legislators taking office in January 2025, the time is NOW to hit the ground running to be prepared and unified in advocacy efforts for the next legislative session!

Track: Leadership/Advocacy

Allyship in Action: Creating Safe Spaces for All Students Within Your Community (K-12)

Dr. Carolyn Strong, EdD, Primary Consultant, Strong Conversations

Allyship in Action is a professional development program designed to empower educators to become effective allies for marginalized students within their school communities. This program provides participants with the knowledge, skills, and strategies needed to create safe and inclusive spaces where all students feel valued, respected, and supported. Through interactive workshops, discussions, and practical exercises, participants will explore the concept of allyship, examine their own biases and privileges, and learn how to advocate for and uplift marginalized voices. By the end of the program, participants will have the tools and confidence to actively promote equity, diversity, and inclusion within their educational settings.

Track: Equity



Continued on next page

COMPREHENSIVE SESSIONS

PRECONFERENCE WORKSHOPS

Counseling 2.0: Integrating Computing in Your Counseling Program (K-12)

Amy Bires, Computer Science and Digital Learning Innovation Consultant, Wisconsin Department of Public Instruction

Kelsey Kman, MEd, Program Manager, NCWIT Counselors for Computing

MaKenzie Johnson, School Counselor, LPC, Assistant Teaching Professor University of Wisconsin-Superior, NCWIT Counselors for Computing Consultant

In our digital-first world, understanding computing is as essential for our students as reading, writing, and arithmetic. This session is a vibrant, interactive workshop designed specifically for K-12 school counselors. It's time to shake up the traditional image of who can be a tech innovator, in line with CS for Wisconsin's initiatives and Wisconsin's growing tech workforce needs. Dive into the wide-ranging field of computing, where the possibilities for our students are as limitless as their imaginations. This workshop will equip you with dynamic strategies to integrate tech knowledge into school counseling programs, ensuring every student can see themselves in computing careers. As the heart of your program, counselors are in a unique position to bridge the tech gap, showing students from all walks of life that they have a place in shaping the future of technology right here in Wisconsin. Let's get ready to inspire the next generation of digital creators and problem-solvers!

Track: Academic/Career/Post Secondary

Educator Nervous System States Through the Lens of Applied Educational Neuroscience (K-12)

Dr. Lori Desautels, PhD, Assistant Professor, Butler University

Adult nervous system states drive child and adolescent social, emotional, and cognitive well-being. In this session, we will explore how trauma and adversity impact the developing brains and bodies of our students and the powerful implications that adult regulation states positively create for a student's social, emotional, and academic growth. Powerful regulatory practices for adults and students will be shared.

Track: Social/Emotional

Engaging Students in Activity-Based Counseling (K-12)

Shawn Becker, MA, Mental Health Navigator, West Bend School District

Activity-based counseling is different from traditional counseling because it involves the participant actively in the learning process. This session is designed so that counselors are taken through a "mini" activity-based counseling experience and will leave with an understanding of how to select and sequence activities that are appropriate for their group's stage and goals. Activities are a powerful way to get students connected with your lessons/topics as well as each other and are a good way to develop life skills such as cooperation, problem-solving, risk-taking, self-management, trust, communication, and creative thinking. The best part is that the engaging activities from this session are easy to use and can be facilitated in almost any setting, including classrooms.

Track: Social/Emotional

It's Never Too Early! Academic and Career Planning in Elementary (K-5)

Heather Noworatzky, MS, Elementary School Counselor, Fond du Lac School District

Abigail Reznicek, Elementary School Counselor, Fond du Lac School District

Fond du Lac Elementary School counselors will share their comprehensive plan for career exploration and planning from kindergarten through 5th grade, supplemental activities for career exposure, and the process of their 5th grade Academic and Career Planning Conference.

Track: Academic/Career/Post Secondary



PRECONFERENCE AND CONFERENCE SCHEDULE

WEDNESDAY, NOVEMBER 6

8:30 a.m.
Preconference Workshop
Registration Opens

9:30 a.m.–4:30 p.m.
Full-day Preconference
Workshops

9:30 a.m.–12:30 p.m.
Half-day a.m. Preconference
Workshops

1:30–4:30 p.m.
Half-day p.m. Preconference
Workshops

7:00–9:00 p.m.
Welcome to WSCA Mixer

THURSDAY, NOVEMBER 7

7:00 a.m.
Conference Registration Opens

7:30 a.m.
Exhibits Open

7:45 a.m.
Sectionals Begin

9:00 a.m.
Opening Keynote Speaker:
Dr. Lori Desautels

10:30 a.m.
Sectionals Restart

5:00–7:00 p.m.
WSCA Social

FRIDAY, NOVEMBER 8

7:30 a.m.
Exhibits Open
Conference Registration Opens
SIG Meetings

8:00 a.m.
Intensive Sectionals Begin

8:30 a.m.
Sectionals Begin

11:00 a.m.
Closing Keynote Speaker:
Dr. William T. L. Cox

VISIT
WSCAweb.org
and click on
Conferences & Events
to learn more about the
speakers and workshops!

COMPREHENSIVE SESSIONS CONFERENCE SECTIONALS **Thursday, November 7, 2024**

Tracks: (A) Academic/Career/Postsecondary, (E) Equity, (L) Leadership/Advocacy, (S) Social/Emotional

7:45–8:45 Sectional 1	10:30–11:30 Sectional 2 10:30–12:00 2i	11:40 –12:00 20 min Sectionals	12:30–12:50 20 min Sectionals	1:00–2:00 Sectional 3 12:50 - 2:20 3i	2:30–3:30 Sectional 4 2:20 - 3:50 4i	4:00 –5:00 Sectional 5
1. Growing School-Based Mental Health and Education Professionals Crystal Huset (L, Intermediate, 60 Min) Elementary Middle High	14. Brief Bias Habit-Breaking Training: Evidence-Based Approaches to Reduce Bias, Create Inclusion, and Promote Equity William Cox (E, Basic, 60 Min) Elementary Middle High	27. Operating Engineer Pre-Apprenticeship Opportunities for High School Students Mindy Mulryan (A, Intermediate, 20 Min) High	30. ASCA Model and Wisconsin Guidance and Counseling Services Requirement (Standard E) Stacy Eslick (L, Basic, 20 Min) Elementary Middle High	34. The Developing Brain and Body and How Adversity Impacts Well-Being Lori Desautels (S, Basic, 60 Min) Elementary Middle High	47. State of the State Stacy Eslick (L, Basic, 60 Min) Elementary Middle High	60. Taking the Next Step in Your Leadership Journey Karen Swanson (L, Intermediate, 60 Min) Elementary Middle High
2. School Counselors and Rural Cultural Wealth: Exploring Resistance to Abandonment Riley Drake (L, Advanced, 60 Min) Elementary Middle High	15.1. The Things I Have Heard High School Students Say Bridget Derge (A, Basic, 20 Min) High 15.2. Building Relationships: Including Individual Student Meetings in Your Annual School Counseling Calendar Lauren Eierman (S, Intermediate, 20 Min) High 15.3. Social Media and Student Mental Health – National Crisis Stacy Eslick (S, Basic, 20 Min) Middle High	28. DEI in Your DNA Timothy Jones (E, Intermediate, 20 Min) High	31. All About AmeriCorps Kyle Clower (A, Basic, 20 Min) High	35.1. Mindfulness as a Small Group and Individual Intervention for Children and Adolescents Victoria Claas (S, Basic, 20 Min) Elementary Middle High 35.2. Fishing for Answers Rhonda Holmes (S, Basic, 20 Min) Elementary Middle High 35.3. Proactive Behavior Systems Amanda Kauth (S, Basic, 20 Min) Elementary	48. Effectively Integrating Solution Focused Counseling Into Your School Counseling Work Mark Gillen (S, Intermediate, 60 Min) Elementary Middle High	61. Putting Families First: How School Professionals Can Support Child Welfare Transformation Angi Krueger (L, Basic, 60 Min) Elementary Middle High
3. Empty Cups: Help Staff (and Yourself!) Fill Your Cups to Better Help Your Students Samantha Swanson (S, Intermediate, 60 Min) Elementary Middle High	16. Future Focused Career Readiness Karin Smith (A, Basic, 60 Min) Elementary Middle High	29. The Latest Updates on PSLF and Student Loan Forgiveness Carole Trone (L, Basic, 20 Min) Elementary Middle High	32. Financial Aid Opportunities at WI's Private, Nonprofit Colleges and Universities Taylor Hooker (A, Basic, 20 Min) Middle High	36. Supporting Students in Dual Enrollment Courses Meagan Strehlow (A, Intermediate, 60 Min) High	49. Unlocking Human Potential: Harnessing Artificial Intelligence to Teach Essential Skills Jennifer Riggie (A, Intermediate, 60 Min) Elementary Middle High	62. Introducing the NEW Wisconsin Career Readiness Standards Karin Smith (A, Basic, 60 Min) Elementary Middle High
4. Anxiety and Autism – Help! Timothy Markle (S, Basic, 60 Min) Elementary Middle High	17. Culturally Relevant Engagement and Anti-Racist Practices in Social-Emotional Learning Carolyn Strong (E, Basic, 90 Min) Elementary Middle High		33. Educator's Rising (A, Basic, 20 Min) High	37. Defining and Mitigating the Adultification of Black Girls in School Spaces Carolyn Strong (E, Basic, 90 Min) Elementary Middle High	50. FAFSA Updates (Again!) College Goal (A, Basic, 60 Min) High	63. Increasing Student Engagement in Career-Based Learning Experiences and Work-Based Learning Opportunities Through a Focus on Equity and Inclusion Beth Kaminski (A, Intermediate, 60 Min) Middle High
5. Your Role in the Equation: Direct Admit WI and Students' Mathematics Course-Taking Barbara Bales (A, Intermediate, 60 Min) High	18. Feelings – Let's Put a Pin in It Sarah Hestres (S, Intermediate, 60 Min) Elementary			38. Careers in Music: New Resources for Counselors, Educators, and Youth Laurie Fellenz (A, Intermediate, 60 Min) Middle High	51. School Mental Health Within an Equitable Multi-Level System of Supports (EMLSS) Libby Strunz (S, Intermediate, 90 Min) Elementary Middle High	64. ACT 60, Direct Admit WI, and ACP – Connecting Career Readiness With Personal Finance Jennifer Andreas (A, Basic, 60 Min) High
6. From Struggle to Success: Maximizing Tier 2 Supports for Elementary Student Achievement Leslie Abruzzo (S, Intermediate, 60 Min) Elementary	19. Chaos to Clarity: Mapping Out Your Tier 1 and 2 Elementary Curriculum and Intervention Sarah Flier (A, Basic, 90 Min) Elementary			39. The Power of Groups: Elevating Tier 2 Interventions Jennifer Betters-Bubon (S, Intermediate, 90 Min) Elementary Middle High	52. AODA (S, Basic, 60 Min) Middle High	65. Revolutionizing Your Approach: Leveraging Equity-Based Curriculum Development Processes to Elevate Outcomes Jennifer Riggie (S, Intermediate, 60 Min) Elementary
7. It's All in Their Head! How Genes, Environment, and Relationships Influence Brain Development Katie Tennessen (S, Basic, 60 Min) Elementary	20. Create Caring and Calm Classrooms – Supporting Kids Emotional and Mental Health With Online Mindfulness Resources From Children's Wisconsin and Growing Minds Clay Anton (S, Intermediate, 60 Min) Elementary Middle High			40. YOU Are the Strategy! Let's Get Ready to Regulate, Relate, and Reason Katie Tennessen (S, Basic, 60 Min) Elementary	53. Bounce Back – Resiliency Skills Andrea Ufheil (S, Basic, 60 Min) Elementary	66. Empowering Others Through a Coach Approach Patrick Uselding (S, Intermediate, 60 Min) Elementary Middle High
8. Creating a Climate and Culture for Independent Learners Kari Steck (S, Basic, 60 Min) Elementary Middle	21. Uniting Families and Schools Through Book Club Kelli Massey (S, Basic, 60 Min) Elementary			41. Exploring the Lived Experience of School Counselors in Training During Internship Lynn O'Brien (L, Basic, 60 Min) Elementary Middle High	54. Confidentiality Crossroads: Balancing Trust and Responsibility Carrie King (L, Basic, 90 Min) Elementary Middle High	67. Therapy Dogs: Training, Certification, and Policies Emily Schiller (S, Basic, 60 Min) Elementary Middle High
9. School Well-Being: Supporting the Mental Health of Teachers Amy Barth (S, Basic, 60 Min) Elementary Middle High	22. Teaching Growth Mindset Through Origami and Expressive Arts Krista Ikeda (S, Basic, 60 Min) Elementary Middle High			42. Thinking About Applying for RAMP? Let's Review Some Tips to Get Your School Started and How to Simplify the Process Michelle Mokrzycki (L, Intermediate, 60 Min) Elementary Middle High	55. Data-Based Universal Practices: Ideas for Monthly Behavior "Reboots" and School-Wide Celebrations Miriam Brown (S, Basic, 60 Min) Elementary	68. Happiness and Leadership Colleen Timm (S, Intermediate, 60 Min) Elementary Middle High
10. Fostering Passions and Purposeful Learning Through Career Pathway Exploration Kevin Pratt (A, Intermediate, 60 Min) High	23. Plan a School-Wide Wellness Conference for Students Brooke Nehring (S, Intermediate, 60 Min) High			43. Small School SEL and Community Building Denys Mallmann (S, Basic, 60 Min) Elementary Middle	56. Racism in the U.S. and the Thru Lines Kim Gary (E, Intermediate, 90 Min) Middle High	69. Tips and Tricks for Intentional, Data-based Small Counseling Groups in Elementary Schools Shelbey Deegan (S, Intermediate, 60 Min) Elementary Middle
11. Alternative Pathways to Graduation Sherry Holly (A, Intermediate, 60 Min) High	24. 504 Plans: What Are They and Who Is Responsible? Cara Wood (L, Basic, 60 Min) Elementary Middle High			44. Using SBIRT, Screening Brief Intervention, and Referral to Treatment, as a Strategy to Motivate Student Behavior Change Jenny Holle (S, Basic, 60 Min) Middle High	57. Bridging Gaps, Building Support: Enhancing Student Mental Health in Sauk Prairie School District Kristin Hinze (S, Basic, 60 Min) Middle High	70. Lost at School Kevin Mahoney (S, Intermediate, 60 Min) High
12. Stigma 101 Brittney Fair (E, Intermediate, 60 Min) Elementary Middle High	25. You Asked, WSCA Listened – School Counselor Advocacy Erin Wood (L, Intermediate, 60 Min) Elementary Middle High			45. Unlocking Success: A Student-Centered Approach to Work-Based Learning Lindsay Allen (A, Basic, 60 Min) High	58. ACP Instruction Andy Gremminger (A, Intermediate, 60 Min) High	71. A Strength-Based Approach to Understanding Our Diverse Student Populations Seevixai Thao (E, Basic, 60 Min) Elementary Middle High
13. Sponsor Sectional TBD	26. Helping Your Entire School Community Under One Wellness Umbrella (Sponsor) Holly Hughes Stoner (S, Intermediate, 90 Min) Elementary Middle High			46. Navigating Wisconsin's ACP Requirements With Xello: Best Practices for Success (Sponsor) Matt Krawczyk (A, Basic, 60 Min) Elementary Middle High	59. Sponsor Sectional TBD	72. Sponsor Sectional TBD

Registration Opens 7:00 a.m. | Exhibits Open 7:30 a.m.–5:00 p.m. | General Session & Keynote 9:00–10:15 a.m. | Current grid is built on times only – room locations will be set at a later date.

* Sectionals are not final and subject to change.

CONFERENCE SECTIONALS*

Friday, November 8, 2024

7:30-8:15 SIGs	8:30 - 9:30 Sectional 6 8:00 - 9:30 6i	9:45 - 10:45 Sectional 7
High School Special Interest Group	73. School Counselors Shift the Focus From Family Involvement to Empowerment Meghan Tagliavia (E, Basic, 90 Min) Elementary Middle High	86. Advocating for the Role of the School Counselor Cara Wood (L, Intermediate, 60 Min) Elementary Middle High
Elementary Special Interest Group	74.1. Wisconsin Wayfinder and the Children's Resource Centers: Support and Resources for Your Families Timothy Markle (L, Basic, 20 Min) Elementary Middle High 74.2. How the ROX Program for Girls Decreased Our Girl Drama and Increased Sense of Belonging Geri Muller (S, Basic, 20 Min) Middle High 74.3. Utilizing DBT to Empower Students With At-Risk SAEBS Scores Jesse Annoye (S, Basic, 20 Min) Middle High	87. Navigating Practicum Dynamics: Understanding Roles, Cultivating Collaboration, and Personal Growth Morgan Esselman (L, Basic, 60 Min) Elementary Middle High
Multi-Level Special Interest Group	75. Transforming School Counseling Beth Gilfillan (L, Intermediate, 60 Min) Elementary Middle High	88. Is a College Degree the ONLY Ticket to Success? Dr. Steven Coyle (A, Basic, 60 Min) Elementary Middle High
Rural and Small Town Special Interest Group	76. Captivating Classroom Lessons Mindy Willard (A, Basic, 90 Min) Elementary Middle High	89. The Real Deal: Creating Authentic ACP Opportunities for Your Staff and Students Susan Verhagen (A, Basic, 60 Min) High
Middle School Special Interest Group	77. Mindset, Relationships, Counseling: Building Your Department One Brick at a Time Jacob Frias (A, Basic, 60 Min) High 78. Got Your Back - A Modern Approach to Universal Mental Health Support Teri Ellefson (S, Intermediate, 90 Min) Middle High 79. How to Promote Self-Love, Inclusion, and Belonging in the Classroom for BIPOC Elementary Students Teysha Bowser (S, Intermediate, 60 Min) Elementary 80. Work Hard, Play Hard: Utilizing Play-Based Interventions to Support Students Social Emotional Needs Sarah Nauman (S, Basic, 60 Min) Elementary 81. Breathe Better, Thrive Together: Elevating Youth Mental Health With Breathwork Stephanie Esser (S, Basic, 60 Min) Elementary Middle High 82. I Don't Have Any Data: And Other Lies We Tell Ourselves Cindy Bourget (L, Basic, 60 Min) Elementary Middle High 83. Find Your Powers Amie Lisowe (S, Basic, 60 Min) Elementary Middle High 84. College and Career Readiness in a Tiered Approach at an Alternative High School Marianne Matt (A, Basic, 60 Min) High 85. Sponsor Sectional TBD	90. Artificial Intelligence, Bias, and Careers MaKenzie Johnson (A, Basic, 60 Min) Middle High 91. Make Your Own Escape Rooms/Breakout Boxes Sarah Flier (S, Basic, 60 Min) Elementary 92. School Based Mentor Program Fred Bartman (S, Basic, 60 Min) Elementary Middle 93. Supporting Challenging Behaviors Through Collaboration and Compassion Sarah Nauman (S, Intermediate, 60 Min) Elementary 94. Let It Go, Unpacking Emotional Backpacks Peter Geissler (S, Basic, 60 Min) Middle High 95. SEL: A New Conversation for Lasting Impact Kim Auer (S, Basic, 60 Min) Elementary Middle High 96. Counseling Multicultural Competence – What Else Is There to Know? Angelica Williams (E, Basic, 60 Min) Elementary Middle High 97. School Counseling and Behavioral Health in Primary Care – There's More in Common Than You Think Jennifer Worley (E, Intermediate, 60 Min) Elementary Middle High 98. Sponsor Sectional TBD

* Sectionals are not final and subject to change.

LOOKING FOR FUNDING TO ATTEND WSCA?



- **Volunteer** to be a Conference Champion and have your conference fees reimbursed! (limited availability)
<https://www.wscaweb.org/conferences/2024-2025-annual-conference/conference-champion/>
- WSCA is offering a special **scholarship application** for Graduate Students who need assistance with their registration fees! <https://www.wscaweb.org/conferences/2024-2025-annual-conference/grad-scholarship/>
- This event qualifies for the **GET KIDS AHEAD INITIATIVE!** DPI's Get Kids Ahead Funding can be used for WSCA membership dues, conference registration, or other WSCA PD!
- Other potential funding sources:
 - Title I: Schoolwide Programs & Targeted Assistance Programs
 - Title II, Part A: Preparing, Training, and Recruiting Licensed Teachers, Principals, and Other School Leaders Grant
 - Title IVA: Student Support and Academic Enrichment
 - Perkins V (high school only)
 - Perkins Reserve Grant
 - IDEA Coordinated Early Intervening Services (limited)
 - DPI Get Kids Ahead Grant
 - DPI Stronger Connections Grant
 - DPI Federal School Based Mental Health Grant
 - DPI Education for Homeless Children and Youth Grant
 - DPI Gifted and Talented Grant
 - ESSR (needs to be spent by September 30, 2024, so register early!)
 - College Board AP Test Rebate (\$9/test)

"All of the elementary counselors in my district are new to the profession or district this year and I felt like the conference gave me a solid scaffolding to help build our program around."

- 2023-2024 Conference Attendee



**WSCA**

1005 Quinn Drive, Suite 158
Waunakee, WI 53597

PRESORTED
FIRST CLASS
US POSTAGE
PAID
MADISON WI
PERMIT #2783

NOVEMBER 6-8, 2024

Kalahari Resort & Convention Center
Wisconsin Dells, Wisconsin

**COME FOR THE LEARNING,
STAY FOR THE WEEKEND!**
REGISTRATION IS OPEN

**Can't access your funds until the new school year?
No Problem! Register today and request
an invoice that can be paid after July 1.*

WSCA 2024

EXHIBITOR & SPONSOR INFORMATION

We invite you to share your expertise with Wisconsin school counselors! We are grateful for your continued partnership as part of WSCA!



Highlights

- Intentional Traffic to Exhibit Hall
- Flexible Registration Support
- Long-Term Visibility for Sponsors
- Sponsorship Opportunities With Higher Levels That Include Exhibit Booths and Advertising

FOR MORE INFORMATION:

<https://www.wscaweb.org/conferences/2024-2025-annual-conference/exhibitor-sponsor-information/>



CONFERENCE REGISTRATION IS OPEN!

**REGISTER BEFORE OCTOBER 1, 2024,
TO SAVE \$75!**

<https://www.wscaweb.org/conferences/2024-2025-annual-conference/>

